

Asbury First NEWS SHEET

DECEMBER 2023

asburyfirst.org

You're invited! Join us for upcoming
worship, fellowship, and fun.

585-271-1050

Dream On

Your dreams for Asbury First are more important than ever!

Join us as we celebrate what God has accomplished through us and begin to dream together again about who God is calling us to be in the years ahead. Look below for the different ways to share YOUR dreams for Asbury First.

1. Share a dream on our Dream Boards around campus.

There will be a large board in the Gathering Center as well as a board in the Education Wing and at the Community Outreach Center with clouds, pens, and pushpins or tape to add your dream.

2. Share a dream on our Online Dream Board.

Visit asburyfirst.org/dream-on to add a note with your dreams for Asbury First from anywhere around the world!

3. Call the church office to add your dreams!

Call us at 585-271-1050 x100 and we will take down your dreams and add them to the dream board.

4. Mail your dreams to the church office!

Address your envelope to 1050 East Avenue, Rochester, NY 14607



2024 Pledge Drive

Your gift brings our dreams for Asbury First to life. Make your pledge to the 2024 Annual Budget today. With your help, we can *Do More Good* each and every day.



Pledge Now!

- asburyfirst.org/pledge-online
- Scan the QR code to the left
- give@asburyfirst.org
- (585) 271-1050
- Mail your pledge to us:
Asbury First United Methodist Church
1050 East Avenue
Rochester, NY
14607

2024 ANNUAL
BUDGET
PLEDGE DRIVE

Christmas Eve Services

Saturday, December 24, In-Person and Livestream

On Sunday, December 24 we observe the Fourth Sunday of the Advent season, as well as Christmas Eve. We are changing our usual Sunday schedule in order to celebrate both of these feasts. *Please note the change in time of our morning services*

10 am - An Advent service of scripture, poetry, and carols in the Sanctuary (live streamed) *This replaces our usual 9:00 and 11:00 Sunday services

12 noon - Traditional Christmas Eve service with carols and candlelight

4 pm - Family Service with Christmas Pageant (live streamed)

7 pm - Traditional Christmas Eve service with choir, carols and candlelight (live streamed)

11 pm - Traditional Christmas Eve service with choir, carols and candlelight



Christmas Eve Turkey Dinner

Saturday, December 24, 5 pm, 1040 Fellowship Hall

Join us for a special Christmas Eve Turkey Dinner in between the 4 pm and 7 pm services. RSVP by December 21 to Paula Dugan at pdugan@asburyfirst.org or call (585) 271-1050 x 111.



Advent Devotionals

Save the dates for these favorite Advent events!

- **Caroling around the tree**
 - Wednesdays 12/6, 12/13, 12/20, 7 pm, 1040 Front Lawn
- **Longest Night Service**
 - Thursday, December 21, 7 pm, 1040 Sanctuary

Advent Devotionals are available in the Welcome Hall! This year, we're printing weekly versions, so look for them each Sunday.

For more information or to view the Advent Devotional visit asburyfirst.org/advent-2023

or request a set of Advent Devotionals by mail by sending us a note:

Asbury First United Methodist Church, 1050 East Avenue, Rochester, NY 14607



The Joy of Christmas Giving

During the Christmas season, our attention is drawn to the abundance in our lives. As Christian disciples, we believe that abundance should be shared. As we exchange gifts with loved ones at Christmas, let us also consider gifts that we can offer to those in our midst who need them most.

For more information visit asburyfirst.org/christmas or write to us!:

Asbury First United Methodist Church, 1050 East Avenue, Rochester, NY 14607

We'd love to hear from you.



New Years Eve Drop In Service of Meditation and Communion

Sunday, December 31, 5-6 pm

Join us New Year's Eve for a drop-in service of meditation and communion. The sanctuary will be open from 5-6pm and you are welcome to come for the whole time or part of the time as we look back at this year and look with hope toward next year. This service will include long periods of silence interspersed with reflective music. All are welcome.



Asbury First Christmas Pageant

Registration is still open!
Pageant is December 24 at 4 pm

Calling all Shepherds and Angels! We would love to have your child be part of Asbury First's Christmas pageant this year on December 24, at 4 pm. Children 4 years old through 5th grade are invited to participate. Rehearsals will be held on Sundays in December during Children's Sunday School immediately following the Children's Time in the 11 am service. Our first rehearsal is Sunday, December 3. Registration Forms can be found in the Welcome Hall and on the 2nd floor of the education wing or visit asburyfirst.org/pageant/ to sign up. For questions or more information, contact Paula Dugan at pdugan@asburyfirst.org.

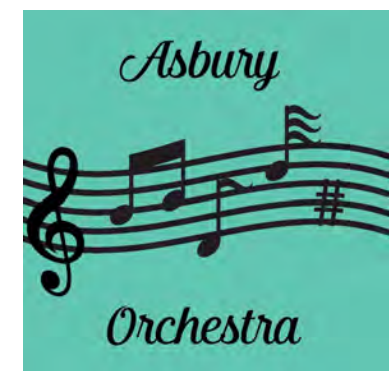


Join the Asbury Orchestra for December Caroling

Sunday, December 17, after 11 am worship, Gathering Center

Did you hear the Asbury Orchestra in worship recently and think "I'd like to do that"? Join us December 10 at 9:30 am in Wesley Hall to rehearse Christmas carols. We will play in the Gathering Center after the 11 am worship service on December 17. All are invited to join the fun!

Questions? Contact Laurie Kennedy at cellokennedy@frontiernet.net.



Carols and Cocoa

Wednesday, December 13, 7pm, Front lawn

Join us as we gather to sing carols and enjoy hot cocoa outside around the Christmas tree each Wednesday during Advent. Starting at 7pm, we will join in singing Christmas favorites, welcoming new faces, and seeing old friends. Bring a friend, you won't regret it.



Special Seasonal Music

Sunday, December 10, 9 and 11 am

Both services this Sunday will feature some special music for the Christmas season, highlighting several works by English composer Gustav Holst. The 9 am early service will be visited by our soloists who will sing Holst's "Four Old English Carols", accompanied by Duane Prill. The 11 am service will also include these pieces, as well as a performance by the Sanctuary Choir of Holst's "Christmas Day", a choral fantasy on Christmas carols. In addition, our children's choirs will make an appearance at the 11am service. Hope to see you there!



Barnes & Noble Bookfair

Saturday, December 9, Barnes and Noble, 3349 Monroe Avenue, Pittsford, NY

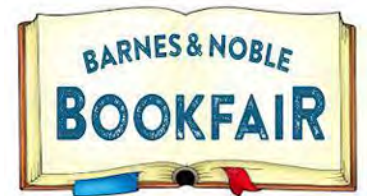
Listen to the Asbury ringers play at 1 pm while you shop! A percentage of the sales from in-store purchases on December 9 will go towards the Asbury First Library's book collection.

If you miss the in-person book fair at Barnes & Noble bookstore, there's still time to show your support!

December 9-13, visit www.BN.com/bookfairs and a percentage of sales through the website will also go towards Asbury First's Library. Just follow these 3 steps:

1. Add the items you want to purchase to your cart and select Checkout.
2. From the Checkout page, scroll to the very bottom and click the plus sign next to Add Bookfair ID.
3. Enter the Bookfair ID into the Apply Bookfair ID field and click Apply.

Book Fair ID#12688545



Madrigalia Holiday Concert

Saturday, December 9, 7:30pm

Madrigalia sings its annual Holiday Concert! Experience an expansive interpretation of the December holidays, with works of Hanukkah, Christmas, celebrations both secular and sacred, meditations on winter, and words of hope.

Joined by the Bach Children's Chorus of Rochester and an instrumental ensemble of flute, violin, cello, percussion, and piano.

Tickets starting at \$10. More information at www.madrigalia.org or by calling 585-230-2894



Women of the Well

Tuesday, December 5, 7pm, Fellowship Hall

On December 5, all are invited to an evening of story telling about women of faith, including Mary and Elizabeth.

Save the date of Tuesday, March 19 when the Women of the Well will present a Lenten themed program titled "Certain Women."

A freewill donation will be accepted on your way out of the performance. Everything that is collected will go directly to Women of the Well to support their programing.

If you have any questions, please contact Deb Bullock-Smith at dbullocksmith@asburyfirst.org or at (585) 271-1050 x117.



Advent Winter Wonder Night

Sunday, December 3, 5 pm, Gathering Center

Asbury First's Children's Ministry invites you to bring your kids and come enjoy breakfast for dinner, Christmas music, and a special Christmas story at 5 pm on Sunday, December 3. Feel free to come in your pajamas as we share the magic of the season with you and your family.



Older Adult Luncheon

Saturday, December 2, Fellowship Hall

Our Older Adults are invited to the Older Adult Christmas Luncheon which will take place on Saturday, December 2 in Fellowship Hall. There will be a Christmas themed program at 11:30 am, so plan to arrive by 11:15 am. Lunch will be served after the program, about 12 pm. All Older Adults are invited to attend. If you have questions, or if you plan to attend, please contact Barbara Eltinge at beltinge@icloud.com or (585) 737-8775. The snow date is Saturday, December 16 and we hope that by scheduling a snow date the weather on December 2 will be sunny and mild!



Hanging of the Greens

Saturday, December 2, 10 am, 1040 Gathering Center

Please join us on Saturday, December 2 from 10 am - 1 pm as we gather together for the Hanging of the Greens. Come when you can! Families are welcome and there will be activities for kids.

Contact Amy Allen with any questions at ajppa@yahoo.com or at (585) 738-9128.



Welcoming our New Director of Communications

Please join us in welcoming our new Director of Communications, David Stith. Raised in Buffalo, David comes to us most recently from NYC where he worked on the design team at the Metropolitan Museum of Art, and was an Art Director in the NYC new classical music scene. We are excited to have him here at Asbury First! David can be contacted at dstith@asburyfirst.org or at 585-271-1050 x109.



TransParent Support Group

2nd Tuesday of the month, 6:30 pm, Youth Room (1040, lower level)

TransParent Rochester NY Chapter is a support group for parents and caregivers raising a transgender or gender-expansive child of any age. TransParent strives to provide an environment that encourages parents and caregivers to speak openly about their experience, speak freely about concerns, challenges, triumphs, pitfalls or new developments and make new connections with other local families who can relate to this experience--with no judgments or unsolicited advice. You are not alone. We are all here to help each other navigate this journey.

Please fill out this brief intake survey prior to the meeting

<https://forms.gle/jgjKivnbvXmoWMn46>. We value privacy and confidentiality, your information is not shared without written consent. This information is for data gathering purposes only.

We look forward to meeting you on December 12.

Bonnie, Patty, and Terri, Chapter Leaders



The Advent Older Adult Luncheon



The Advent Older Adult Luncheon included some carol singing, with candles to get us in the mood for the season!



The Asbury First Christmas Tree Installation



Our tree arrived on flatbed truck...



...and was stood upright with the help of a cherry picker.

With the assistance from some helpful hands and a few strings of lights our tree will add some light to these longest nights.



Advent season at Asbury First is under way!



We are now mid-way through the Advent season, a season of waiting together, of reflection, of thankfulness and giving.



CONTINUING CLASSES, GROUPS, AND EVENTS

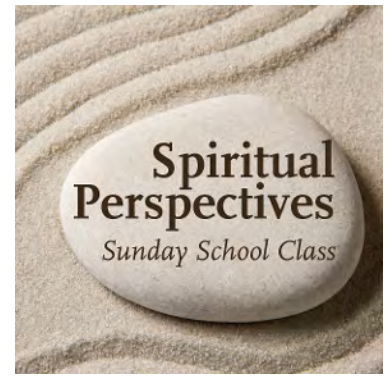
Spiritual Perspectives Class

Sundays, Beginning October 1, 9–10:15 am, 1050 Teak Room

On Sunday, October 1, you are invited to join a new Sunday School class. We will meet in the Teak Room in the 1050 church office building from 9–10:15 am with a format focusing on weekly conversation about connections. Each week a different person will present a brief devotion, and through dialogue about the topic, we will discover the places we connect through sharing ideas and experiences.

While we recognize that there is always room for grace, and that life happens, we hope that you will commit to a three-month period of attending this class. This ensures some continuity and builds community and trust, and helps us get to know each other a little better.

If you have any questions, please contact the Rev. Kathy Thiel at 585-271-1050 x106, or kthiel@asburyfirst.org.



As The Spirit Moves Us

Sundays, 9:45–10:45 am, Room LL03 and Zoom (zoom.us/j/6174865464 PW Disciple)

As The Spirit Moves is a class founded on forming a welcoming community to study Biblical events through scripture as well as Christian-based literature. All are welcome, and every voice is heard as we become better together.

On Sunday, September 10, our class began by exploring the resurrection of Christ Jesus and the ways we can live a life leading us to resurrection. From there we will let the Spirit move us to continue to follow The Way. For more information about this class, please contact Mike Mullin at mmullin@asburyfirst.org or at 585-271-1050 x105.



Adult Sunday School Class

Sundays, 9:45–10:45 am, 1040 Fellowship Hall and Zoom (zoom.us/j/8347173468 PW 200)

We will have faithful discussions covering myriad topics, and would love to have your voice be a part of our community! For more information about this class, please contact Mike Mullin at mmullin@asburyfirst.org or at 585-271-1050 x105.

Class Topics (for up-to-date information, please visit asburyfirst.org/events):

- **October 8** — A presentation on Communications at Asbury First led by Sarah Brubaker.
- **October 15** —SEEKING THE FACE OF GOD — How do you see God? Where do you find the face of Jesus? And in turn, how does God see you? Does Jesus behold you? Come join us on October 15 in Fellowship Hall to seek the face of God in our world and in each other. Please feel free to bring an item that reminds you of God or helps you to enter into prayer. Or simply bring yourself...let's discuss how we are made in the sacred image of Jesus. Music, prayer and discussion. All are invited!!!! Facilitated by Colleen Schantz.
- **October 22** —Tithing and Stewardship — A conversation on the history and biblical foundations of tithes and giving led by Mike Mullin.
- **October 29** —Theater and Theology — If you enjoy the varied theater productions at Asbury First, then you will enjoy hearing from Director Larry Dugan on why these types of programs are beneficial not just for our community, but also for our faith.
- **November 5–19** — God and Guns — This three-week Bible Study on “Kingdom Dreams Violent Realities: Reflections on Gun violence from Micah 4:1-4” was produced by The United Methodist Church in 2014 and was revised and updated in 2016. Our conversations will take this foundation and update it once again to our context today in Rochester. These classes will be led by members of our Asbury First community.



CONTINUING CLASSES, GROUPS, AND EVENTS

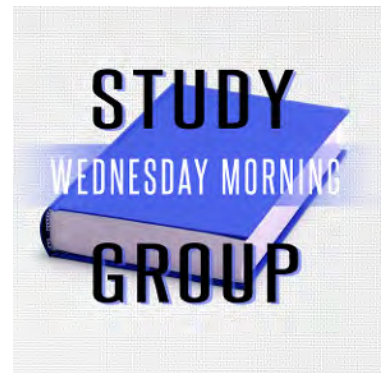
Wednesday Morning Study Group

Wednesdays, 10–11:30 am , 1010 Red Room and Zoom (zoom.us/j/6174865464 PW Disciple)

All are invited to join this book discussion group as we meet in-person and on Zoom on Wednesday mornings. Some have been a part of this group for years, while others come and go depending on availability and the books that we are reading. This year, we will be reading: *A Pilgrimage to Eternity*; *Poverty, By America*; *The Gift of Years*; *The Flag, The Cross, and The Station Wagon*; and we will finish up with a few documentary films on *Discover Islam*.

Through the fall to Advent, we will read *A Pilgrimage to Eternity*. This book highlights a pilgrimage from Canterbury to Rome, and will invite us to consider our own pilgrimages of faith that we have encountered throughout our lives. We will begin our next book, *Poverty, By America*, at the start of Advent.

For more information, please contact Mike Mullin at mmullin@asburyfirst.org.



Lectio Divina

Tuesdays, 8:30–9 am, Zoom (zoom.us/j/8347173468 PW 200)

Lectio Divina is a contemplative practice on reading scripture. A passage of scripture is read, then there is silent meditation, then the passage is read again, then more silence, and then discussion. The silence is an opportunity to reflect upon what you experienced in the scripture. This half hour opens and closes with prayer. All are welcome. For more information please contact Rev. Kathy Thiel at kthiel@asburyfirst.org or at 585-271-1050 x106.



Tuesday Women's Fellowship

Tuesdays, 9:30–10:30 am, Zoom (zoom.us/j/8347173468 PW 200)

Looking for a way to stay connected to your Asbury First friends during the week? Want to meet new Asbury First friends? All women, all ages, are welcome to join the Tuesday Women's Fellowship via Zoom, 9:30–10:30 am each week. Bring your coffee or tea, and perhaps a treat, zoom in and enjoy an hour of devotion, sharing, and connection. If you have any questions or would like more information, please contact Elizabeth Church, coordinator, at emchurch418@gmail.com. Hope to see you soon!



Asbury Art Class – Silk Painting

Tuesdays, 12:30–3 pm, 1040 Room 205

The Asbury Art Class will begin a new project starting on September 5. We are going to paint on silk scarves. This means the scarves will be stretched on frames and painted with your design. All materials — stretcher frames, silk scarves, paints, brushes, and designs will be provided. Cost will be assessed after class size is determined. Please email Linda Clemow at soulsourcstudio1@gmail.com for more information and to register.



CONTINUING CLASSES, GROUPS, AND EVENTS

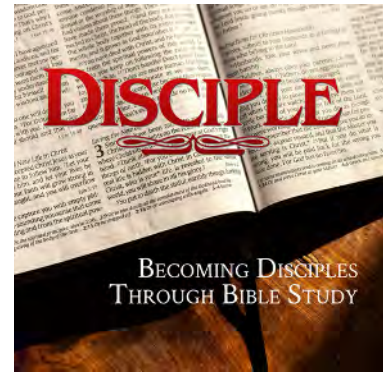
Disciple III Bible Studies

Tuesdays, 2-3:30 pm, Zoom (zoom.us/j/6174865464 PW Disciple)

Fridays, 9:30-10:30 am, Zoom (zoom.us/j/6174865464 PW Disciple)

The Disciple Bible Study series encourages participants to read portions of the Bible everyday, and offers a study guide to help focus our thoughts and questions. We gather together in community to share, reflect, and learn from one another on the readings from the week. This fall, we have two Disciple Bible Study groups that will both be meeting on Zoom.

Friday mornings will be led by Mike Mullin, and will be starting the second half of Disciple III which focuses on the Pauline Epistles. Tuesday afternoons will be led by Ruthellen Hoyle, and will be starting at the beginning of Disciple III, which focuses on the Old Testament prophets. Both groups are open to all. Please contact Mike Mullin with questions or for more information at mmullin@asburyfirst.org or at 585-271-1050 x105.



Yoga at Asbury First

Tuesdays, 3 pm, Gathering Center, \$10 pay at the door

Thursdays, 4 pm, Gathering Center, \$10 pay at the door

Gentle Yoga has returned to Asbury First each Tuesday at 3 pm and now Thursday at 4 pm. Each session will be gentle in nature, beginner-friendly, and inclusive to those in need of different supports. Join us for an hour of breathing, movement, and awareness, with meditation. Please wear loose-fitting clothing that is comfortable for a wide range of movement. A limited number of yoga mats and props (blocks, straps, etc.) will be available, but you are encouraged to bring your own.

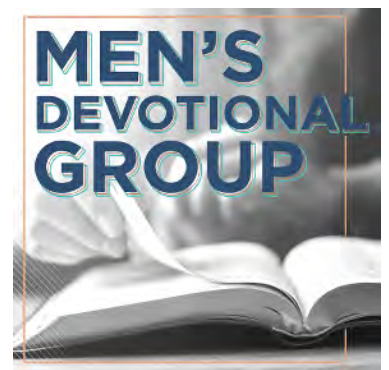
The sessions will be run by Kelly Noyes, who is certified from the Kripalu School of Yoga and Health and is registered with Yoga Alliance (RYT 200). For more information, please contact Kelly at knoyes710@aol.com.



Men's Devotional Group

Wednesdays, 7 am, Zoom (zoom.us/j/8347173468 PW 200)

Men of all ages are welcome to join us on Wednesday mornings via Zoom as we discuss topics of faith, life, and more. Each week, a different member of the group leads us in a devotion for our time together. These can be instructional, reflective, conversational, etc. This is a wonderful group to make and build connections, and we hope that you will drop in to join us!



CONTINUING CLASSES, GROUPS, AND EVENTS

Prayer Shawl Ministry

4th Wednesday of the Month, 3–4:30 pm, Library

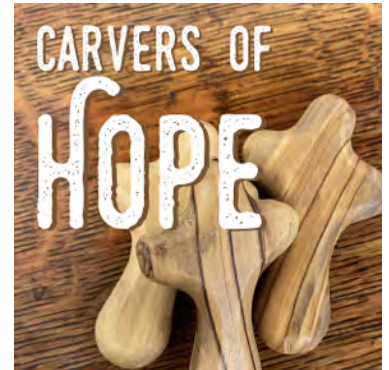
A prayer shawl is a simple shawl or a lap blanket knitted by members of our group. It is symbolic of an inclusive, unconditionally loving God. The knitting itself is very simple and we have “experts” on hand to help you if you are a beginner. The group meets monthly on the fourth Wednesday. Clergy and lay members of our church identify those who may benefit from our ministry and a shawl, and they're delivered by ministers or congregation members. Questions? Contact Meredith Pixley at meredithpixley@gmail.com.



Carvers of Hope

4th Wednesday of the Month, 6:30–8 pm, Education Wing

Carvers of Hope is a wood carving ministry that helps people who find themselves in the very difficult places of life. Its members carve handmade crosses as a reminder of the hope Jesus brought to us through the cross. All materials, wood, and carving tools are provided, as well as carving lessons. No prior skill is needed to carve crosses with this group. If you have any questions or would like more information, please contact John Smalt at jhsmalt@gmail.com.



LGBTQ+ Advocacy Meeting

3rd Sunday of the Month, Beginning October 15, 9:45 am, 1040 Youth Room (lower level)

Asbury First's LGBTQ+ Advocacy Group will be holding its first meeting of the season on Sunday, October 15 in the Youth Room (in the lower level of the church), as our church community celebrates National Coming Out Day. Anyone affiliated with LGBTQ+ community and allies are welcome to attend. We will be setting our agenda for the year, planning for events, outreach, and educational opportunities in our community. Youth and adults are welcome! For more information, please contact Deb Bullock-Smith at 585-271-1050 x117 or at dbullocksmith@asburyfirst.org.





Dining & Caring Center

Open for hot meals, and shower and hair care services. Laundry services by appointment.

Hours:

- Breakfast served Wednesday–Friday, 7–9 am; Lunch served Sunday only, 12–1pm
- Hair Care services available the last Sunday of the month from 12–1 pm
- Shower services available Wednesday–Thursday from 7–9 am on a first-come, first-serve basis
- Laundry services available Wednesday–Thursday from 7–9 am by appointment (Appointments are made in-person the prior week and are on a first-come, first-serve basis)

Bike Repair Ministry

- R Community Bikes will provide basic bicycle repair and tune-ups

on a first-come, first-serve basis at the garage behind the COC and playground.

- **Hours:** Returns in May 2024

Evarts UR Well Clinic

- **Hours:** Thursday evening from 6–8:30 pm
- **Appointments:** Schedule by calling the church office at 585-271-1050 or online at bit.ly/URWell-Appointment

Storehouse

- **Hours:** Monday–Thursday from 9 am–3 pm, as well as the third and fourth Saturday of the month from 9 am–12 pm.
- **Donations:** We are accepting donations in our new donation building (small brick building) located next to the COC at 1010 East Ave.

Grocery Bag Ministry

- The GBM has transitioned fully to operating in the Community Outreach Center. Join us on Saturday, October 21 at 8 am to help us pack groceries for those in need.

Community Garden

- The Community Garden has provided bountiful amounts of fresh vegetables this Summer to food ministries such as the DCC, Grocery Bag Ministry, and AME Zion's food deliveries. All produce goes for this purpose, and is not available for individual harvesting. With Fall's approach, the garden is slowing down and will be put to bed over the Winter with first frosts. We welcome volunteers to help us over the Winter plan for next season.

If you are interested in volunteering in the Center you can do so by visiting asburyfirst.org/coc or by calling the Rev. Pat Dupont at (585) 271-1050 x136. For any other needs, call our full-time social worker, Robin Manley at 585-271-1050 x138.

NEEDED ITEMS, SERVICES, AND FUNDRAISERS

Bakers! We need your talents!

This Christmas Eve, a most Holy night, we want to show our Asbury First hospitality to all that come to worship with us. Please start bringing your yummy bakes, cookies and bars to the Gathering Center kitchen. If you'd like your container returned to you, please label it clearly with your name. Contact Paula Dugan if you have any questions at pdugan@asburyfirst.org



Help Us Read Tutors Needed

School is open and we are looking for tutors for the Help Me Read program at School 17 grades K-4. New Tutor Training/Orientation is scheduled for October 10 and 17 from 10–11:30 am. If you are interested in tutoring please contact John Smalt at jhsmalt@gmail.com or at 585-924-8624.

RETURNING TUTORS: Please call Ms. Linda at 585-766-8440 to schedule your start date. Thanks for your support!



Storehouse Items Needed

The Storehouse is in need of winter jackets for our neighbors as our inventory is very low. If you have jackets/coats in your closets at home that you'd like to donate, now is the time (no wool or dry clean only). If you'd like to donate a new winter jacket, we are most in need of:

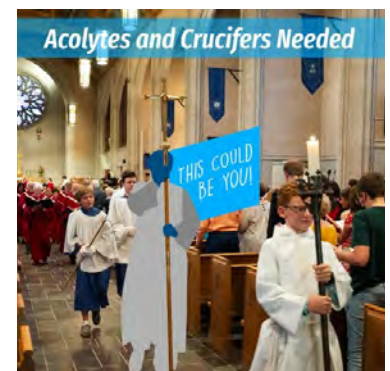
- Children's (boys and girls) sizes 5T and 6-18
- Men's ALL sizes

Bring them to the Community Outreach Center (COC) Monday–Thursday between 9 am and 3 pm or drop them off anytime in the donation building outside of the COC. Thanks in advance for your generosity!



Acolytes and Crucifers Needed

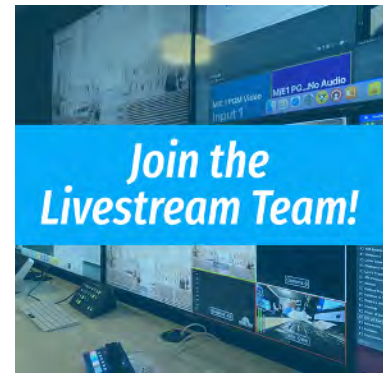
Have you ever wanted to participate in worship — but without having to speak in front of people? You may have noticed that some weeks we have an acolyte, crucifer, and Christ candle that all help to lead our procession into worship and our recession out into the world. Each of these roles help to remind us that Christ goes before us—both in this space and beyond. We would love to have each of these roles fulfilled at every service. If you would like to volunteer to be an acolyte (the ones that light the candles), the crucifer (the one that carries the cross), or to carry our Christ candle, please contact Mike Mullin at mmullin@asburyfirst.org. We would love to have you join our team as we help spread and share the light of Christ!



NEEDED ITEMS, SERVICES, AND FUNDRAISERS

Join the Livestream Team!

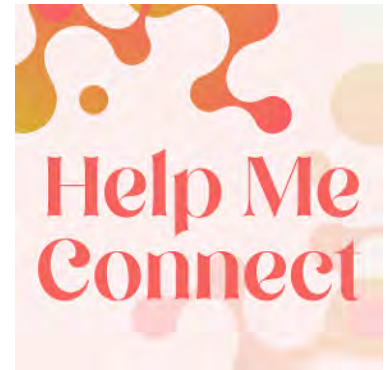
Are you interested in joining Asbury First's live streaming team? You will learn how to use our professional broadcast equipment and video production techniques. More importantly, you will support the digital ministry that helps us *Do More Good* in Rochester and around the world. Youth and adults are welcome. There will be training opportunities soon. Please contact David Berg at bergdm@gmail.com to learn more.



Help Me Connect

Are you interested in taking the next step in your faith journey, finding your place in the life of Asbury First, or are just in need of a deeper connection? There is a place for you!

Scan the QR code, visit asburyfirst.org/help-me-connect, or call the office at 585-271-1050 to connect.



CELEBRATIONS AND CONCERNS

ALTAR FLOWERS

The flowers on the altars are given to the glory of God and in loving memory of our granddaughter June Lucille Francis by Ann & John Francis.

If you would like to place flowers on the altar, please contact Jeanne Ristau at 585-223-4356, preferably two weeks ahead of requested date.

PRAYERS AND CONCERNS

We offer our prayers and concerns for all those who are ill at home, hospitalized, or in hospice care.

We offer our prayers and concerns for the friends and family of John McBride who passed away recently.

We offer our prayers and concerns for Julie Flynn whose mother passed away on November 30.

We offer our prayers and concerns for Deanna Varble whose father passed away on December 5.

We offer our prayers and concerns for Jon Patterson, father of Susan and Matt Guffy, who is hospitalized at Strong.

We offer our prayers and concerns for the friends and family of Karen Manasco Kelly, who passed away on November 19.

We offer our prayers and concerns for Ralph Eckhardt and his family following the death of his wife, Joyce, on November 7.

We offer our prayers and concerns for the friends and family of Karen Manasco Kelly, who passed away on November 19.

Stay up-to-date with events, links, and information with our online calendar, or call 585-271-1050.

asburyfirst.org/events

DEADLINE FOR NOVEMBER ANNOUNCEMENTS: Monday, October 16

To submit an announcement, email communication@asburyfirst.org, call the church office at 585-271-1050, or fill out the online form at asburyfirst.org/bulletin-announcement.
If you'd like to receive regular paper communications, please call the church office at 585-271-1050.