

Asbury First NEWS SHEET

APRIL 2023

asburyfirst.org

You're invited! Join us for upcoming
worship, fellowship, and fun.

585-271-1050

HOLY WEEK



SUNDAY, APRIL 2 9 am **SERVICE** – Traditional chapel service
11 am* **SERVICE LS** – Traditional service celebrating Palm Sunday



THURSDAY, APRIL 6 7 pm* – Silent meditation
7:30 pm* **SERVICE LS** – Worship begins with communion and a candlelight re-enactment of Christ's last night, ending with placing the cross on the East Avenue lawn by our Christ-figure.



FRIDAY, APRIL 7 12 pm* **SERVICE LS** *Envisioning the Passion* – Holy Week- themed art and choral music.
5–6:30 pm **Good Friday Family Night** – A come-when-you-wish child-friendly event.

7 pm **Seven Last Words SERVICE** at Baber AME Church – 550 Meigs St, Rochester, NY 14607



SUNDAY, APRIL 9 9 am* **SERVICE** – Traditional service celebrating Easter Sunday
11 am* **SERVICE LS** – Traditional service celebrating Easter Sunday

Learn more at asburyfirst.org/easter

**Childcare is available at these services; LS services will be livestreamed*

Asbury First Library *BIBLIOCART*— Easter

Sunday, April 2, Gathering Center near piano, Bibliocart

The first Sunday of each month after the 11 am service the church library bibliocart will meet you in the church Gathering Space with a full selection of new library purchases and the theme of the month.

This month (April 2) the focus is on Easter with numerous books on this topic. You can check out the books—for free—right there at the bibliocart—just in front of the piano. Stop by and check us out on this first Sunday in April: April 2, just one short week before Easter.



Good Friday Family Night

Friday, April 7, 5–6:30 pm, Gathering Center

Join us on Friday, April 7 any time between 5:30 and 6 pm in the Gathering Center for Family Prayer Night. This is a very special night. As a family, you can receive communion, walk the labyrinth, and participate in different activities that draw us closer as a family to God and our faith.

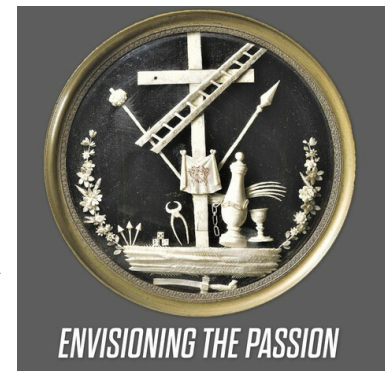


Envisioning the Passion

Friday, April 7, 12 pm, In-Person and Livestreamed

Asbury First's Good Friday service on April 7 at noon is a multimedia presentation of music and readings which are accompanied by large-screen projections of works of art that explore Christ's last hours. The service includes images selected by Lucy Winters Durkin, an Instructor in Art History at the Eastman School of Music; choral music; and organ music played by Duane Prill with Brian Donat joining on cello. Envisioning the Passion is always a powerful experience for all who attend.

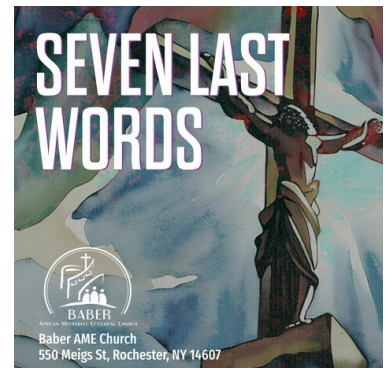
This year's service explores the "Instruments of the Passion," the many emblems that remind us of episodes in Jesus' journey between Palm Sunday and Good Friday without any words. These rich and complex visual symbols traditionally are interpreted as the tools used by God to wage war against sin and the devil. The lessons interweave readings of scripture and related poetry, including a 9th century poem written in the voice of the cross itself.



7 Last Words Service

Friday, April 7, 7 pm at Baber AME Church, 550 Meigs St, Rochester, NY 14607

Hosted by the Rev. James Simmons and Baber AME Church (550 Meigs St, Rochester, NY 14607), the Rev. Dr. Stephen Cady and Rev. Jackie Nelson will be participating in sermons about the texts of Jesus's final words from the cross.

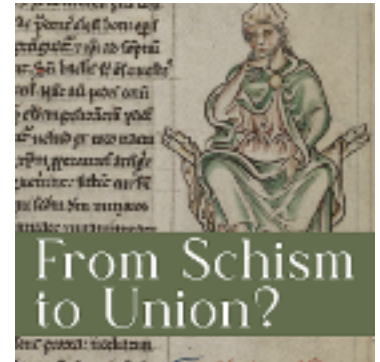


New Class: From Schism to Union?

Wednesdays, April 12, 19, 26, 6-7 pm, Fellowship Hall

Led by Dr. Jeff Brubaker

Many of us know Jeff as the spouse of our Director of Communications, as an expert of ancient church heresies, and as a new dad to Eirene. In addition to these accolades, Dr. Brubaker recently celebrated the publication of his first book, *The Disputatio of the Latins and the Greeks, 1234: Introduction, Translation, and Commentary*. And while this title may not lend itself to becoming a New York Times Best-Seller, Jeff has put together an enticing 3-session course that will be accessible to all. This course will highlight some of the histories that led up to the "Great Schism" of the East and West churches, and the subsequent conversations of church leaders who ostensibly were working to heal this divide.



Visit asburyfirst.org/news for more information, or contact Mike Mullin at mmullin@asburyfirst.org.

Bishop Héctor A. Burgos Núñez Preaching & COC Open House

Sunday, April 23, starting at 11 am, 1040 Sanctuary and 1010 Community Outreach Center

Save the date!! Bishop Héctor A. Burgos Núñez will be preaching during Sunday worship on April 23 in the Sanctuary. Also, join us for an open house of the new Community Outreach Center after the service! More information coming soon!

Visit asburyfirst.org/news to learn more about the Bishop.

Visit asburyfirst.org/coc to learn more about the Community Outreach Center.



New Communications Appointment

We are pleased to announce that, effective immediately, Sarah Brubaker will be our new Director of Communications. This change in title from Communications Coordinator recognizes Sarah's hard work and dedication over the last few years keeping Asbury First connected during a challenging time. In her tenure, she has already brought us to new heights in our communications and we look forward to the ways she will continue to help us tell our story and live our mission in the years ahead. Please join us in congratulating Sarah for this well-deserved honor.



Get Your Own "Do More Good" Hat!

Sunday mornings, 1040 Welcome Hall, or during the week at the church office (1050 East Ave)

Do you want to show off your Asbury First spirit on cold days? Well now you can with the "Do More Good" knit cap! Thanks to an incredible donation by Brian and Joanne White, 100% of the proceeds will support the new Community Outreach Center. The hats cost \$15 and will be available for sale on Sunday mornings starting March 19 in the Welcome Hall, or during the week at the church office.



For more information, visit asburyfirst.org/news or call the church office at 585-271-1050.

Children's Sunday

Sunday, April 30, 11 am service

Join us at 11 am on Children's Sunday, April 30, as the children lead us in all aspects of worship from ushering, reading scripture, leading prayer, singing and ringing bells and presenting a "sermon", a children's musical, titled *Table For Five Thousand – The Miracle of the Loaves and Fishes* by Tom S. Long and Allen Pote. Come show your support for these young people so eager to participate in worship.



The Sound of Music

Performances:

Friday, May 5, 7 pm,

Saturday, May 6, 7 pm,

Sunday, May 7, 2 pm

Tickets are now on sale for Asbury First's production of *The Sound of Music*! Based on the true story of the Von Trapp Family Singers, this play captures a personal tale of growth and hope amidst the horrors of World War II. Our multi-generational cast is working hard to bring this stellar musical to life.

You can help support this production by buying advertising space in the program or becoming a sponsor of our project. We also have opportunities to support your favorite cast or crew member(s) with a special message in the program for \$25 each.

Visit asburyfirst.org/som to purchase tickets. For more information, contact Larry Dugan at ldugan@asburyfirst.org. We hope to see you there!



In This Moment: Revolution, Reckoning, Reparation

May 10 and 17, 6-7 pm in Fellowship Hall

"In This Moment" is a project that brings together teams of black leaders, writers, and photographers as they put together a chapbook—a short book that showcases the talents of each of the three individuals of the team. You can learn more about the teams by visiting asburyfirst.org/news.



Reaching the Property Care Team

If you need to reach someone from our property care team to access the building or for other assistance, please call 271-1050, ext. 139 (the 455-6974 number is no longer in use). This will reach whoever is on duty at the time. Generally, the team is available between 8 am and 10 pm.



Warning: Scam/Phishing Emails or Texts

It has come to our attention that some of our staff and members have been receiving text messages or emails from Stephen with odd requests, usually asking for money or gift cards. Please ignore these requests. The Asbury First staff will never ask you to send cash immediately or to give your personal information over an open email.

Here are a few guidelines to recognize scam/phishing emails or texts:

Be suspicious of urgent demands for information. Often spoofed e-mails will make some form of urgent request.

Look for misspelled words or grammatical errors in the message and/or hyperlink.

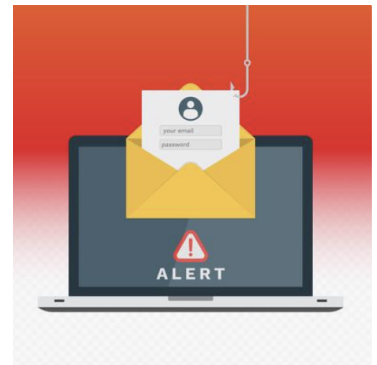
Avoid e-mailing personal and financial information.

Be watchful of general greetings.

Contact Asbury First directly to verify the request before responding.

Another way to avoid them is to check the email address and make sure it has @asburyfirst.org at the end. If it does not, immediately delete the email before opening it as the staff will only contact you using official email addresses.

For more information, please contact David Strong at dstrong@asburyfirst.org or at 585-271-1050 x110.



Racial Equity Update

In 2020, a short-term Racial Justice Advocacy team formed and spent many hours over several months gathering information about how members at Asbury First could participate in Racial Justice work through education and partnering with local advocacy groups. A newly-formed Racial Equity ministry will be taking on long-term work of building racial equity at Asbury First. One of the first things this group has done is to compile the information gathered by the original team into one accessible place as a resource for our congregation.

A new section of the website is the Racial Equity Resource Database. It will be updated regularly. Visit asburyfirst.org/racialequity to download a PDF of the database or for more information on the group. You can contact Rev. Rachel Dupont at rdupont@asburyfirst.org or at 585-271-1050 x113 with any questions.



Thank You Asbury First!

The Morehouse College Glee Club and the Concert Planning Committee extend a heartfelt thank you to Asbury First United Methodist Church family and staff for your outstanding hospitality and support, because of you, the concert was an overwhelming success.



CONTINUING CLASSES, GROUPS, AND EVENTS

As the Spirit Moves Us New Study

Sundays, 9:45-10:45 am, 1050 Teak Room

On Sunday, February 12, this class began a new study based on the book, *The Women of Easter* by Liz Curtis Higgs. All are invited to join us on a six-week journey of discovery into the lives of some of our faith's original female pastors. In a very personal way, Ms. Higgs takes the reader on Christ's journey through the experiences of Mary of Bethany, Mary of Nazareth, and Mary Magdalene. All three women are transformed by the Savior, and we will share in their faith journeys. For more information, please contact Mike Mullin at mmullin@asburyfirst.org or at 585-271-1050 x105.



Queerfully and Wonderfully Made

Open to all LGBTQ+ Youth and Youth Allies
Sundays, 9:45-10:45 am, Youth Room

Psalm 139:4 says that we are fearfully and wonderfully made. This has been used to highlight how we are each made in the image of God—and that we are created good! We encourage all youth—those who are out, those who are questioning, and those who are affirming of their peers—to join us on Sunday mornings as we consider the connections of the LGBTQ+ community and our faith. In addition to checking out Bible stories, characters, and traditions that promote inclusion, we will also take time each week to check in and support one another. This group will be facilitated by Evann Hasenauer, our CRCDS supervised ministry student who has a passion for bringing faithful LGBTQ+ inclusion and representation to the forefront in youth and young-adult spaces. Questions? Contact Mike Mullin at mmullin@asburyfirst.org or at 585-271-1050 x105



Monday Morning Crew

Mondays, 9 am–12 pm, 1040 Workshop

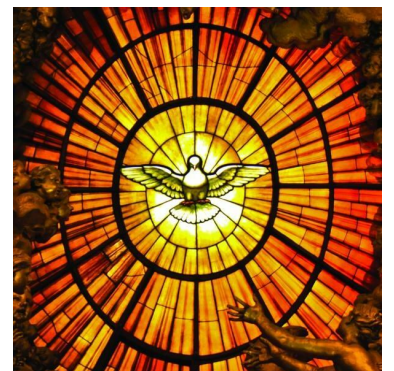
The Monday Morning Crew is a group that works on odd jobs, fixes, and other needed projects in support of the Sextons around the Asbury First campus. They recently worked over 700 hours changing out the light fixtures in 1040 and 1050 to a more energy-efficient LED lights. If you are interested in joining the group, please contact Dave Kennedy at 585-787-0422.



Lectio Divina

Tuesdays 8:30–9 am, Zoom (zoom.us/j/8347173468 PW 200)

Lectio Divina is a contemplative practice on reading scripture. A passage of scripture is read, then there is silent meditation, then the passage is read again, then more silence, and then discussion. The silence is an opportunity to reflect upon what you experienced in the scripture. This half hour opens and closes with prayer. All are welcome. For more information please contact Rev. Kathy Thiel at kthiel@asburyfirst.org or at 585-271-1050 x106.



CONTINUING CLASSES, GROUPS, AND EVENTS

Tuesday Women's Fellowship

Tuesdays, 9:30-10:30 am, Zoom (zoom.us/j/8347173468 PW 200)

Looking for a way to stay connected to your Asbury First friends during the week? Want to meet new Asbury First friends? All women, all ages, are welcome to join the Tuesday Women's Fellowship via Zoom, 9:30–10:30 am each week. Bring your coffee or tea, and perhaps a treat, zoom in and enjoy an hour of devotion, sharing, and connection. If you have any questions or would like more information, please contact Elizabeth Church, coordinator, at emchurch418@gmail.com. Hope to see you soon!



Asbury Art Class

Tuesdays, 12-3 pm, Room 205 (Bell Room), \$20 per person

The Asbury Art Class will begin working on projects with polymer clay! (Think Sculpey — although there are other brands). We will explore the properties of polymer clay to develop milleflora techniques as well as for practical uses for in-the-home items. Bring a lunch. At 12:30 pm each class, I will present a PowerPoint program on the "Elements and Principles" of art. At 1 pm we will begin working with the polymer clay. Class runs from noon until 3 pm every Tuesday. There will be general materials supplied as part of the \$20 per-person cost for the class. Please email Linda Clemow to register at soulsourcstudio1@gmail.com or call the church office.



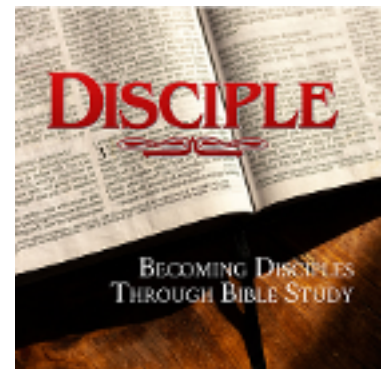
Disciple II Bible Studies

Tuesdays, 2:30-3:30 pm, Zoom (zoom.us/j/6174865464 PW Disciple)

Fridays, 10-11 am, Zoom (zoom.us/j/6174865464 PW Disciple)

Have you ever wondered what the Bible really says—and if it truly has any meaning for us in modern times? If so, then you're not alone. Most Christians have never really read the Bible, and many wonder if its antiquated teachings truly transcend time. If you would like to grapple with these questions, then you are encouraged to sign up for a Disciple Bible Study.

On Tuesdays, the Disciple II class will continue its journey through Exodus this fall as it prepares to transition to the New Testament books of Luke and Acts. On Friday mornings, the Disciple III class will be focusing in on the books of Luke and Acts. Please contact Mike Mullin, mmullin@asburyfirst.org, with any questions, and use this link to sign-up for a Disciple Bible Study!



CONTINUING CLASSES, GROUPS, AND EVENTS

Music, Meditation, and Imagination Group

Tuesdays, February 28–April 4, 6 pm, 1040 Room 201

“Music gives a soul to the universe, wings to the mind, flight to the imagination, and life to everything” – Plato.

Join us for our Music, Meditation, and Imagination group to deepen your spiritual awareness through music. Each week the group will explore a Bible passage or spiritual text through meditation, music listening, and drawing/journaling for reflection. Bring a yoga mat, a blanket, and a pillow (although not required to participate.) Drawing materials will be provided. This hour-long group will meet on Tuesday evenings at 6 pm in Room 201 from February 28 – April 4.

For more information, please contact Chris Gold at goldcreativeartstherapy@gmail.com.



Prayer Shawl Ministry

4th Wednesday of the month, 3–4:30 pm, Library

A prayer shawl is a simple shawl or a lap blanket knitted by members of our group. It is symbolic of an inclusive, unconditionally loving God. The knitting itself is very simple and we have “experts” on hand to help you if you are a beginner. The group meets monthly on the fourth Wednesday. Clergy and lay members of our church identify those who may benefit from our ministry and a shawl, and they're delivered by ministers or congregation members. Questions? Contact Meredith Pixley at meredithpixley@gmail.com.



Men's Devotional Group

Wednesdays, 7 am, Zoom (zoom.us/j/8347173468 PW 200)

Men of all ages are welcome to join us on Wednesday mornings via Zoom as we discuss topics of faith, life, and more. Each week, a different member of the group leads us in a devotion for our time together. These can be instructional, reflective, conversational, etc. This is a wonderful group to make and build connections, and we hope that you will drop in to join us!



Wednesday Night Community Dinner

Wednesdays, 5:30 pm, Gathering Center, \$5 good-will donation

Remember the family-style meals we had on Wednesday nights? Well, they're back! What a great way to join in communion with others before enriching your spirit with classes, groups, or events, on a Wednesday night. We hope you will join us as we return to this wonderful tradition of family, faith, and community. There will be a \$5 good-will donation per person each week. For more information, contact Paula Dugan at pdugan@asburyfirst.org or at 585-271-1050 x111.



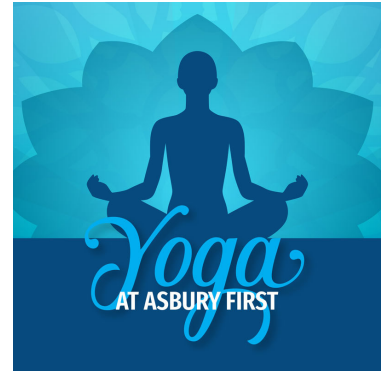
CONTINUING CLASSES, GROUPS, AND EVENTS

Yoga at Asbury First

Tuesdays, 3 pm, Gathering Center, \$10 pay at the door
Thursdays, 4 pm, Gathering Center, \$10 pay at the door

Gentle Yoga has returned to Asbury First each Tuesday at 3 pm and now Thursday at 4 pm. Each session will be gentle in nature, beginner-friendly, and inclusive to those in need of different supports. Join us for an hour of breathing, movement, and awareness, with meditation. Please wear loose-fitting clothing that is comfortable for a wide range of movement. A limited number of yoga mats and props (blocks, straps, etc.) will be available, but you are encouraged to bring your own.

The sessions will be run by Kelly Noyes, who is certified from the Kripalu School of Yoga and Health and is registered with Yoga Alliance (RYT 200). For more information, please contact Kelly at knoyes710@aol.com.



Older Adult Visitation Re-ignites

As we continue to reengage post-lockdown and following the COVID concerns of the past three years, Asbury First is looking to reach out with visitation of our older adults and those unable to come to church. In conjunction with our Older Adult Council, we will be identifying those who may want a visit, and are asking for persons willing to make some visits. The Rev. Kathy Thiel will lead us in discussing how we envision re-igniting this important ministry. There will also be time for questions and clarifications. Please contact either Judy Messenger, at messenger5@aol.com, or Elizabeth Church, at emchurch418@gmail.com.



Radio and Phone Connection Update

RADIO:

The last few weeks, our radio broadcast partner WRFZ 106.3 Rochester Free Radio has been in the process of moving offices. Due to the move, the radio broadcast is currently down. You can access the broadcast on their website at www.rochesterfreeradio.com. We understand this is inconvenient and ask for patience as we wait for this broadcast to return.

PHONE:

We have also recently had an update with our livestream broadcast over the phone. The service has implemented a change to avoid calls from spammers/ bots. When you dial our toll-free number (1-833-829-1050), you will be asked to press '5' to continue to the broadcast.

(Please share these updates with anyone who might benefit from these additional ways to connect).





Community Outreach Center Update

Dining & Caring Center

- Opening for hot meals on Sunday, April 9 at 12 pm
- **Hours:** Breakfast served Wednesday–Friday, 7–9 am; Lunch served Sunday only, 12–2 pm

Evarts UR Well Clinic

- **Hours:** Thursday evening from 6–8:30 pm
- **Appointments:** Schedule by calling the church office at 585-271-1050 or online at bit.ly/URWell-Appointment

Storehouse

- **Hours:** Monday–Thursday from 9 am–3 pm, as well as the third and fourth Saturday of the month from 9 am–12 pm.
- **Donations:** We are accepting donations in our new donation building (small brick building) located next to the COC at 1010 East Ave.

Grocery Bag Ministry

- The GBM has its sights on moving into the new building for their April packing.

Community Garden

- The Community Garden Team is meeting and preparing for the spring planting.

If you are interested in volunteering in the Center you can do so by visiting asburyfirst.org/coc or by calling the Rev. Pat Dupont at (585) 271-1050 x136.

For any other needs, call our full-time social worker, Robin Manley at 585-271-1050 x138.

Dining & Caring Center — Easter Lunch

Easter Sunday, April 9, 12-2 pm, 1010 Community Outreach Center

We are overjoyed to announce the opening of the Dining & Caring Center! We will have our first offering of a hot meal at lunch on Easter Sunday. It has been more than three years since we served a meal in-person in the Dining & Caring Center. We are overjoyed to relaunch our hot meals and to celebrate new life and resurrection.

This is all thanks to your incredible generosity! We appreciate your continued support in the battle against hunger.



NEEDED ITEMS, SERVICES, AND FUNDRAISERS

KOP: Road to Resilience Gala

Wednesday, April 26, 6-9 pm, Memorial Art Gallery

Please join Keeping Our Promise at our fundraiser gala, Road to Resilience at the Memorial Art Gallery. Road to Resilience provides gala guests with an intimate view of the incredible journey wartime ally individuals and families take to escape the life-threatening situation they are in for serving US interests in Afghanistan.

KOP Afghans have overcome tremendous obstacles and continue to press forward in hope of a new and better life, for them and their family. Their road to resilience is an inspiration to all.

The event will be an evening of hors d'oeuvres and libations catered by Max Rochester, with art installations, music, silent auction, keynote speaker Lt. Gen. John Bradley, Chief of Air Force Reserve, and desserts.

Visit <https://asburyfirst.org/newsletter/> to learn more.



Help Needed: Communion Stewards

As we continue to acclimate to our 'post-pandemic' life together, we are exploring ways to offer Holy Communion that meet the needs of our congregation. In order to do this well, we would like to equip and empower a team of Communion Stewards.

If you are interested in helping to plan, set up for, and/or clean up after Communion, please contact Rev. Rachel Dupont: rdupont@asburyfirst.org (585) 271-1050 x113.



Needed Storehouse Items

The Storehouse has been fully operational for a few weeks now and we are happily settling into our new location. We are thrilled to offer a fully-accessible shopping experience for our clients and a more streamlined sorting area for our volunteers. This is all possible from the generosity of our members and the community.

Now that we are back in business, we have a new need for **gently used children's shoes/sneakers size 13 and under**. To drop off donations, you can deposit them in the small brick building in front of the main entrance. Thank you for your continued support.



SAVE THE DATE—Spring Campus Cleanup

Saturday, April 15, 9 am

Come join us for our Annual Grounds Clean Up on April 15 starting at 9 am. If you have rakes, leaf blowers, and tarps, please bring them! Please contact David Strong at dstrong@asburyfirst.org or 585-271-1050 ext. 110 if you have any questions. We hope to see you there!



NEEDED ITEMS, SERVICES, AND FUNDRAISERS

Needed: UR Well Clinic PPD Test Readers

The UR Well Clinic is in need of additional TB test (PPD) readers on Sunday mornings for about one hour. You would be meeting with patients in our new Outreach Center with a greeter to assist you. You will be oriented to Asbury First's process and you would not be needed any more than once a month or possibly less.

Certification will be available at MCDH TB Clinic or if you are certified to read PPDs at your place of work you will qualify. If you are a licensed medical professional, active or retired, we welcome you to join our team.

For more information please contact Lin Vanderstyne RN, Reading Coordinator, at ljv@frontier.com.



Help Me Connect

Are you interested in taking the next step in your faith journey, finding your place in the life of Asbury First, or are just in need of a deeper connection? There is a place for you!

Scan the QR code, visit asburyfirst.org/help-me-connect, or call the office at 585-271-1050 to connect.



Stay up-to-date with events, links, and information with our online calendar, or call 585-271-1050.

asburyfirst.org/events

DEADLINE FOR MAY ANNOUNCEMENTS: Monday, April 24

To submit an announcement, email communication@asburyfirst.org, call the church office at 585-271-1050, or fill out the online form at asburyfirst.org/bulletin-announcement. If you'd like to receive regular paper communications, please call the church office at 585-271-1050.